

Author – *A.Kishore*
<http://www.appsdba.info>

Integrate Discoverer 10g with Oracle Applications R12

Download the software using the below link

<http://www.oracle.com/technology/software/products/ias/htdocs/101202.html>

Business Intelligence <input type="checkbox"/>	x86: 1.4 GB CD1, CD2, Tools CD	x86: 1 GB CD1, CD2	SPARC: 2.1 GB CD1, CD2	PA-RISC: 1.5 GB CD1, CD2, CD3	AIX5L: 1.7 GB CD1, CD2, CD3
	Itanium: 946 MB CD1, CD2	Itanium: 1 GB CD1, CD2	x86: 1 GB CD1	Itanium: 1.6 GB CD1, CD2, CD3	Power Linux: 1.1 GB CD1, CD2
					ZLinux: 1.2 GB CD1, CD2

[as_linux_x86_bi_101202_disk1.cpio](#)

[as_linux_x86_bi_101202_disk2.cpio](#)

On UNIX: To extract the cpio file, move the cpio file to an empty directory, then do: `cat filename.cpio | cpio -icd`. To verify the integrity of a downloaded file has been transferred to a Unix host, run `cksum` and compare with the `cksum` information listed on this page.

Set the environment

```
useradd oradisc -g dba
```

```
su - oradisc
```

```
vi .bash_profile
```

```
echo " Oracle 10g discoverer Environment for PROD"
```

```
export ORACLE_HOME=/d01/oracle/discoverer
```

```
export PATH=$PATH:$ORACLE_HOME/bin:$ORACLE_HOME/opmn/bin
```

```
export TNS_ADMIN=$ORACLE_HOME/network/admin
```

Author – *A.Kishore*
<http://www.appsdba.info>

1. Install Discoverer standalone

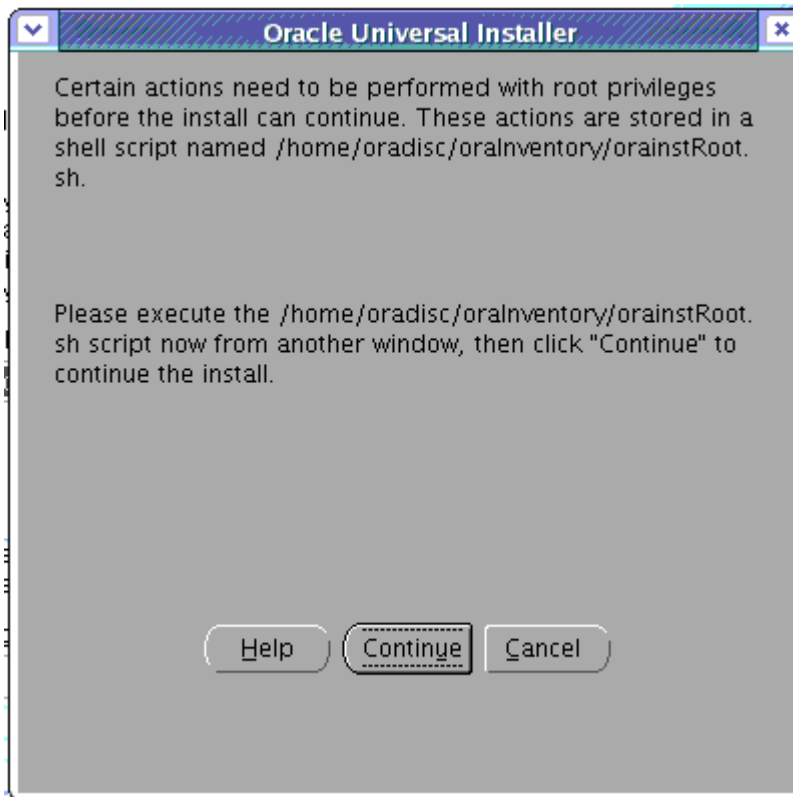


Author – *A.Kishore*
<http://www.appsdba.info>

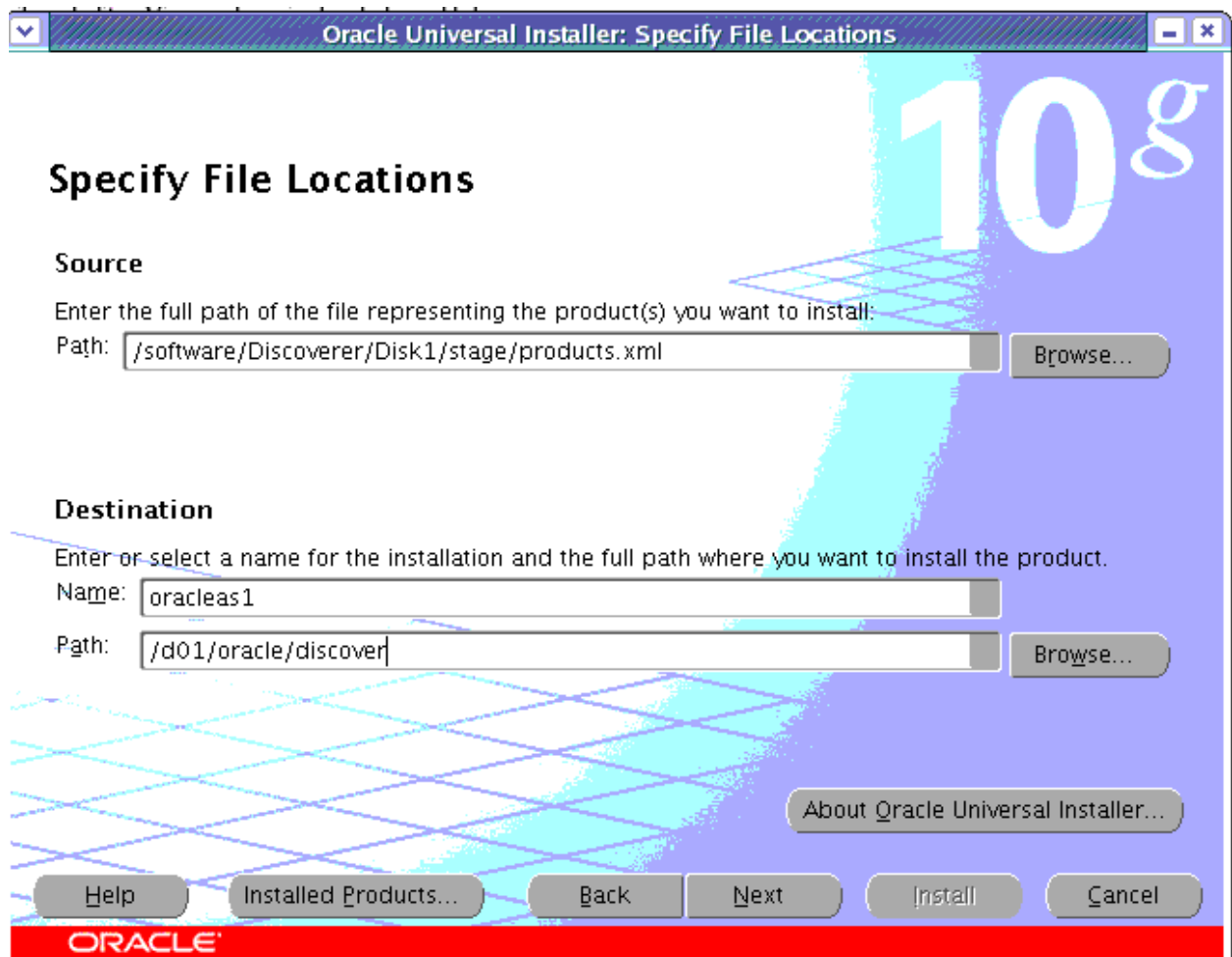


Author – *A.Kishore*

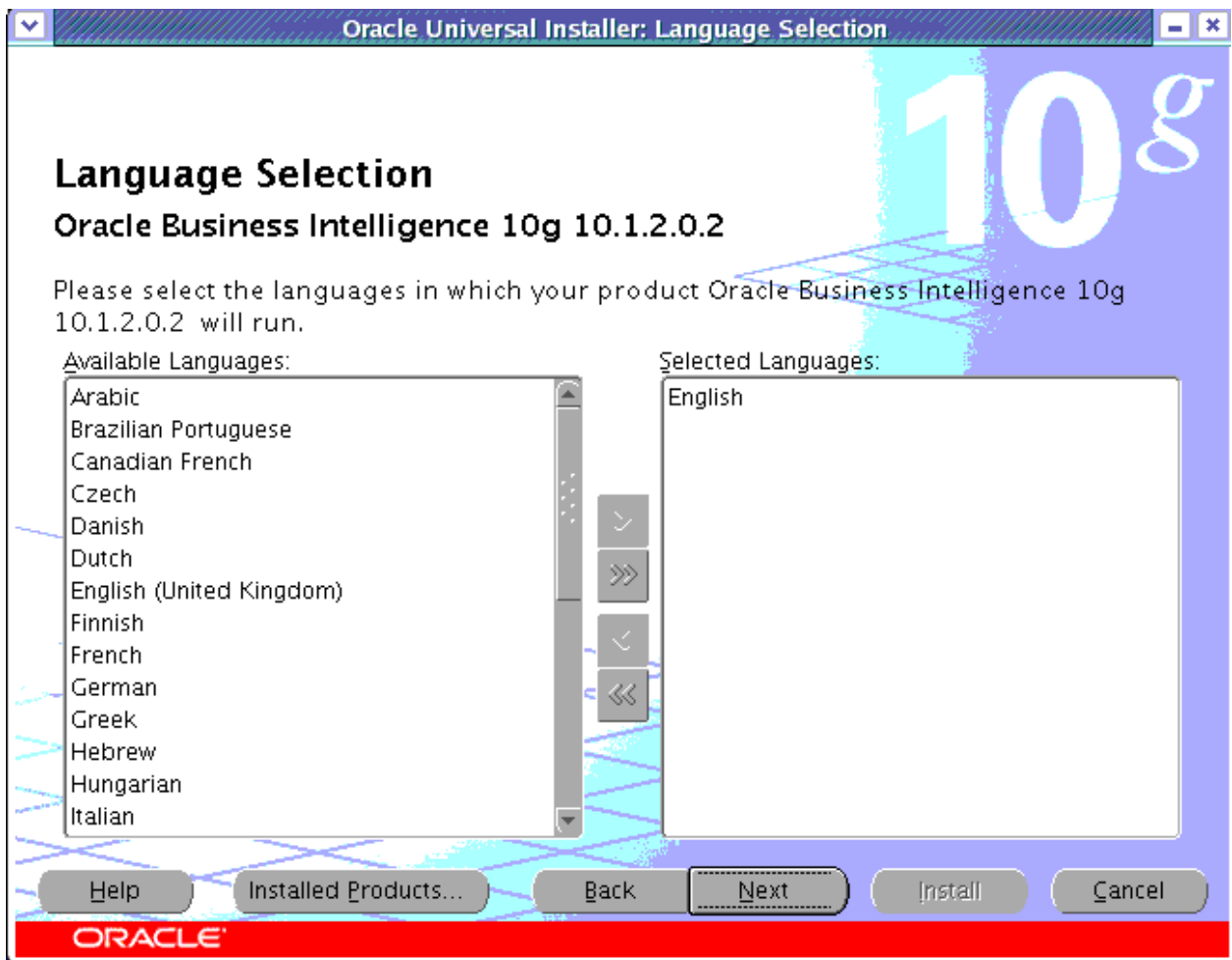
<http://www.appsdba.info>



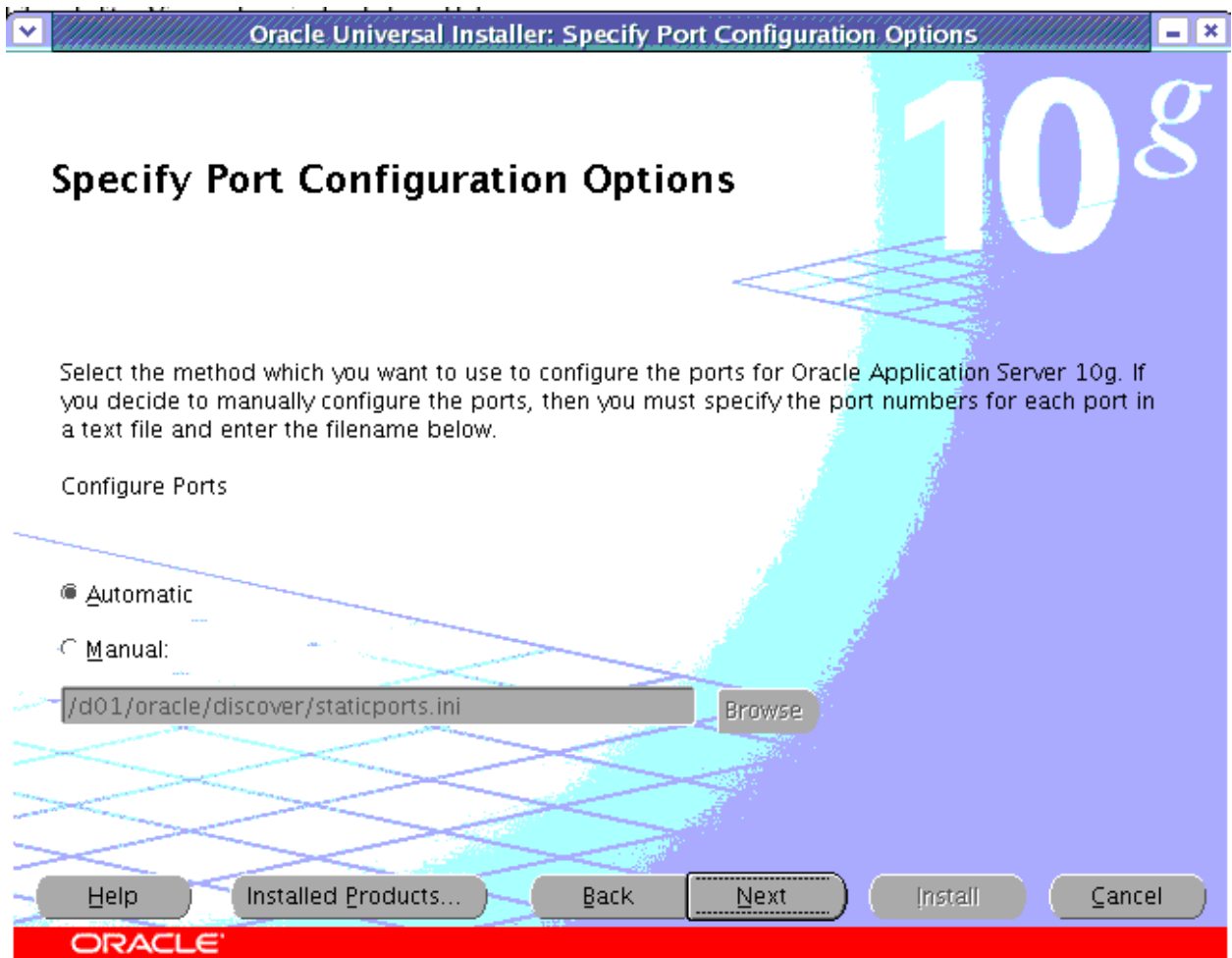
Author – *A.Kishore*
<http://www.appsdba.info>



Author – *A.Kishore*
<http://www.appsdba.info>



Author – *A.Kishore*
<http://www.appsdba.info>



Author – *A.Kishore*
<http://www.appsdba.info>

Oracle Universal Installer: Specify Instance Name and ias_admin Password

Specify Instance Name and ias_admin Password

All Oracle Business Intelligence instances installed on a host must have unique names. The hostname and domain name of the host are appended to the instance name.

Each Oracle Business Intelligence instance has its own password, regardless of which user performed the installation. Passwords are not shared across instances, even if the instances were installed by the same user.

The password must have a minimum of 5 alphanumeric characters, maximum 30 characters, and at least one of the characters must be a number.

Administrator Username: ias_admin

Instance Name:

ias_admin Password:

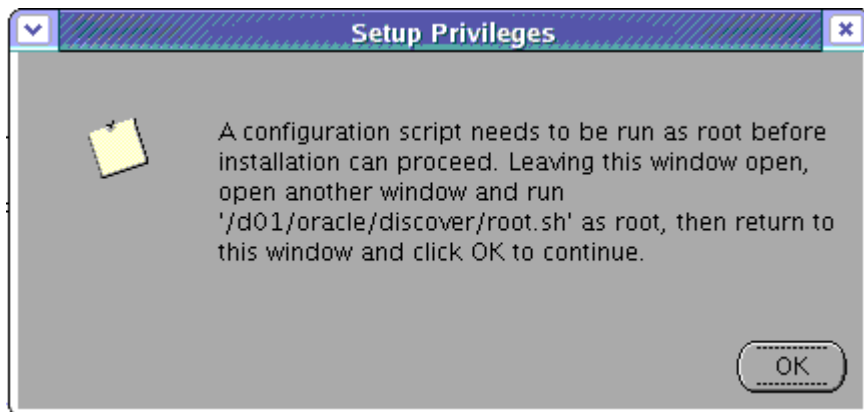
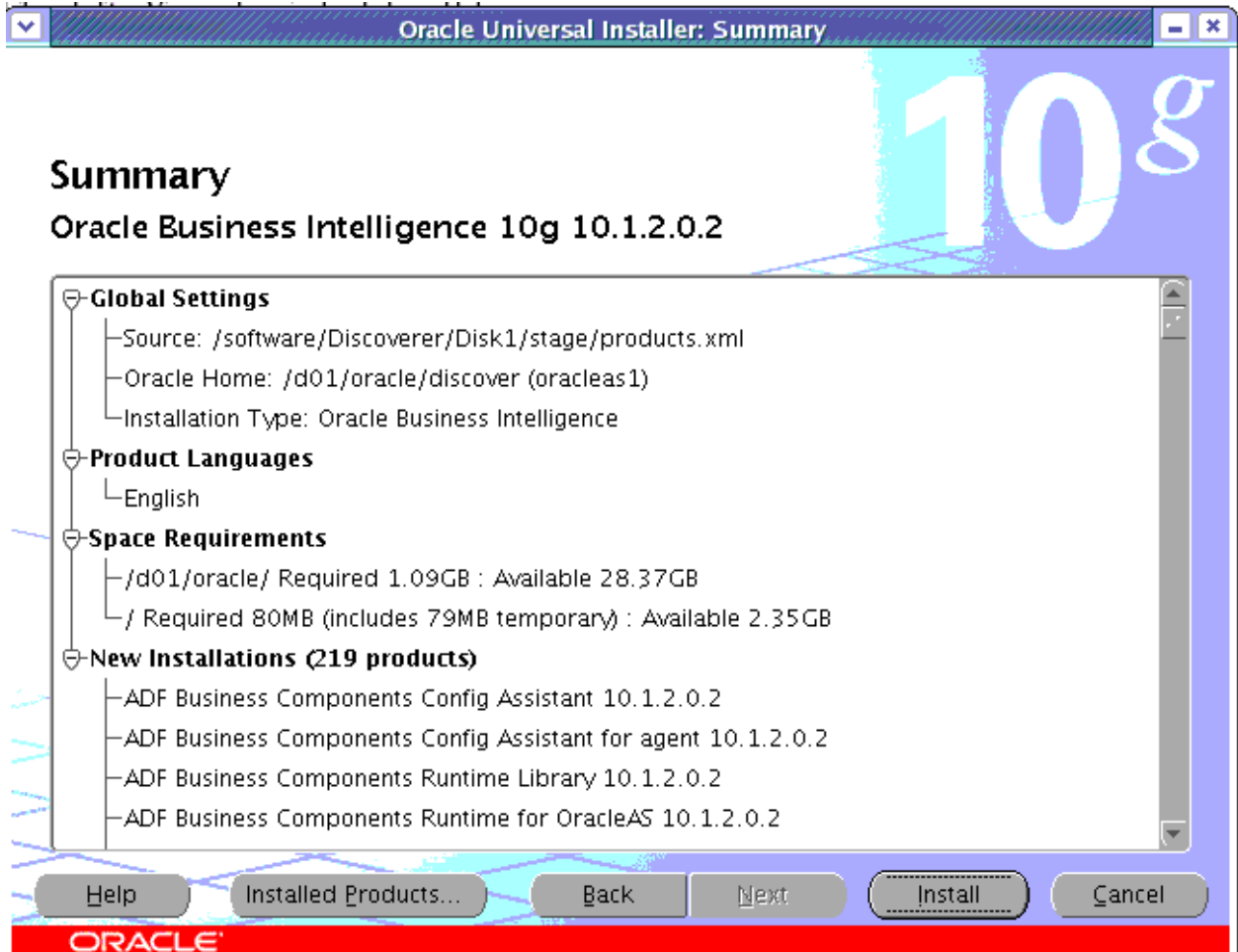
Confirm Password:

Help Installed Products... Back Next Install Cancel

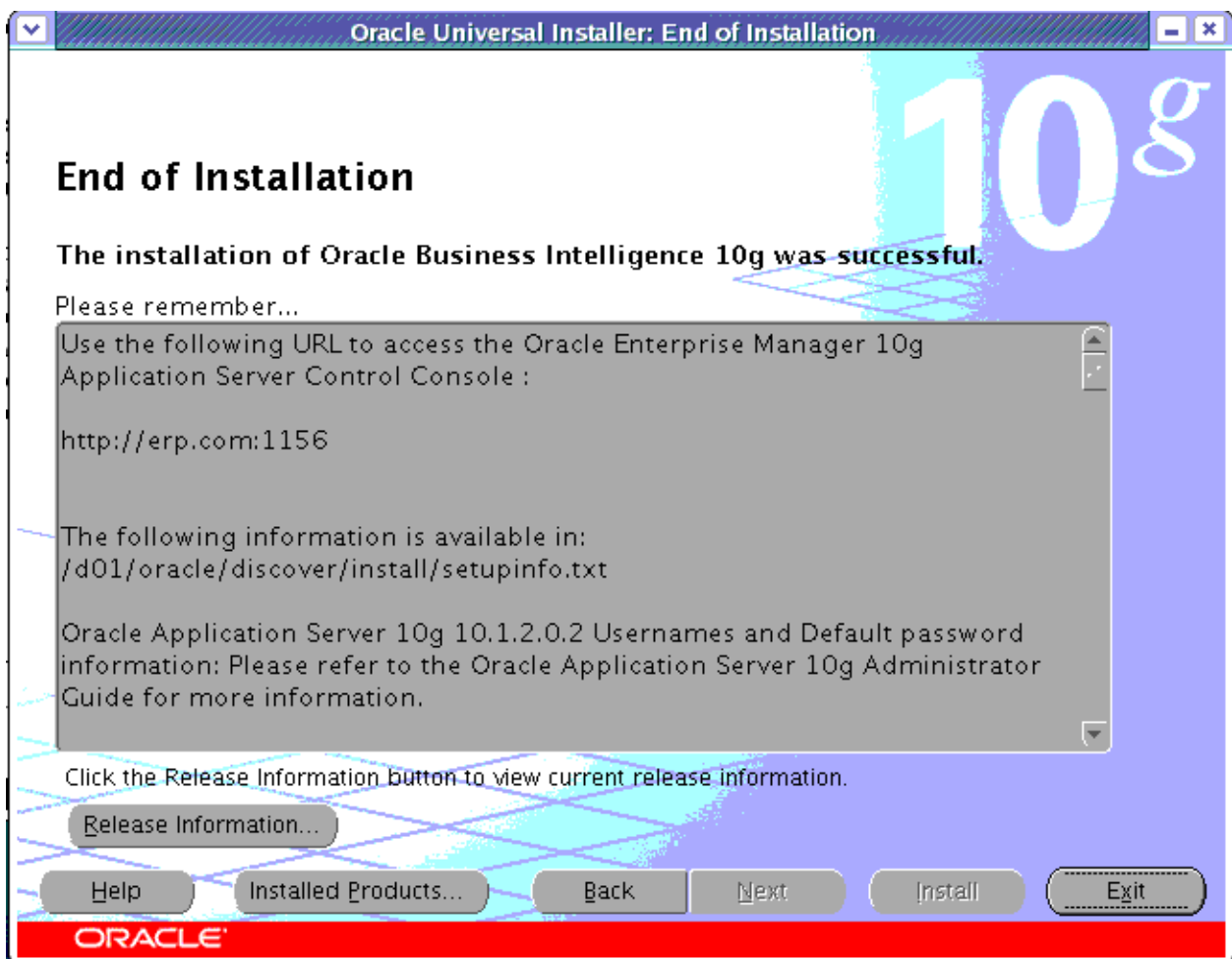
ORACLE

oracle10g

Author – *A.Kishore*
<http://www.appsdba.info>



Author – *A.Kishore*
<http://www.appsdba.info>



The base version of Discoverer is
`cd $ORACLE_HOME/bin`
`strings -a dis51ws |grep "Discoverer Version:"`
Discoverer Version:Server 10.1.2.48.18

Author – *A.Kishore*
<http://www.appsdba.info>

Apply patch [5983622](#) - Upgrade Oracle Application Server to 10.1.2.3.0

Stop the services

\$ORACLE_HOME/opmn/bin

opmnctl status

```
Processes in Instance: discoverer.erp.com
```

ias-component	process-type	pid	status
DSA	DSA	N/A	Down
LogLoader	logloaderd	N/A	Down
dcm-daemon	dcm-daemon	8858	Alive
WebCache	WebCache	9148	Alive
WebCache	WebCacheAdmin	9110	Alive
OC4J	home	9111	Alive
OC4J	OC4J_BI_Forms	9113	Alive
HTTP_Server	HTTP_Server	9115	Alive
Discoverer	ServicesStatus	9120	Alive
Discoverer	PreferenceServer	9124	Alive

./opmnctl stopall

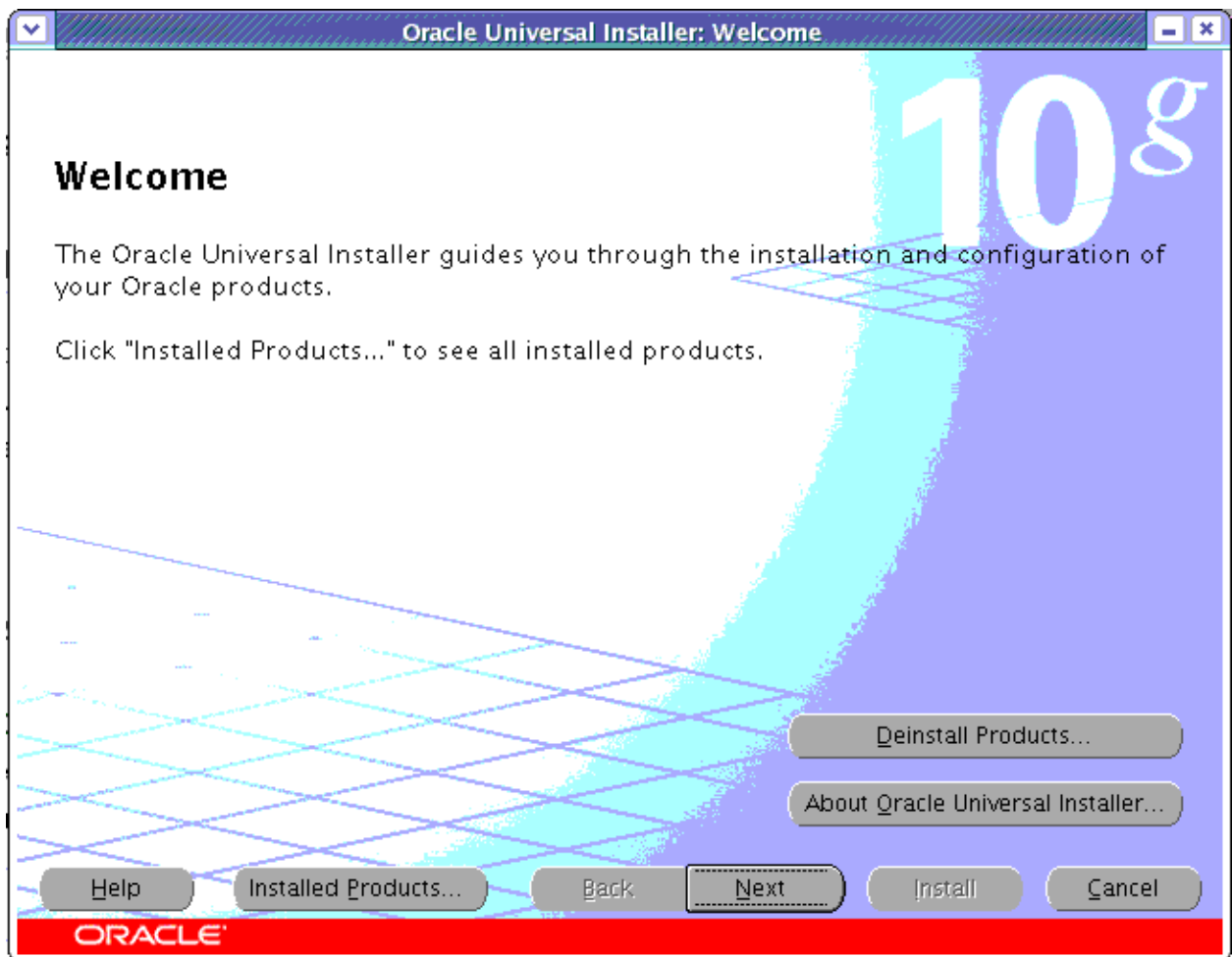
pwd

\$ORACLE_HOME/bin

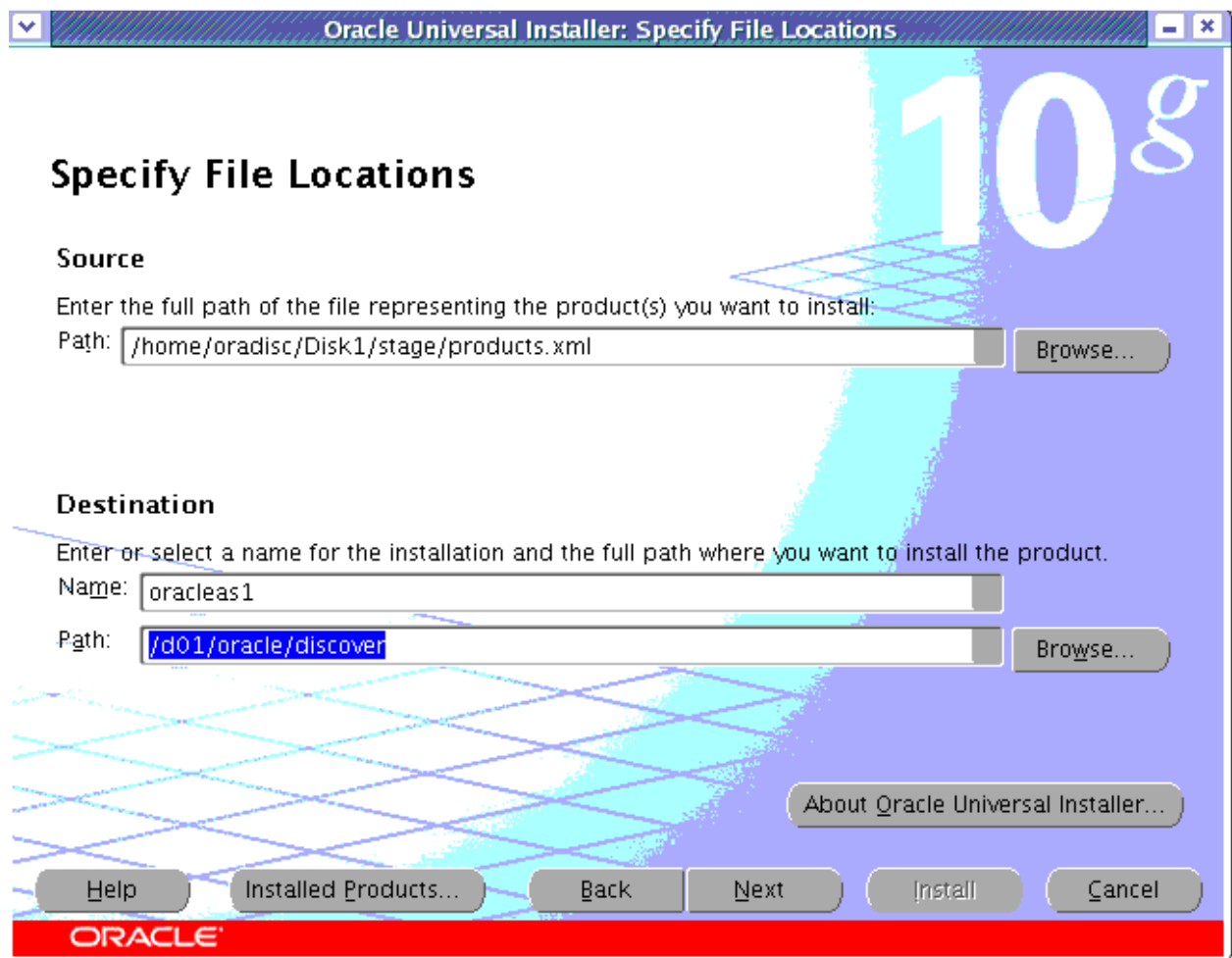
./emctl status iasconsole

./emctl stop iasconsole

Author – *A.Kishore*
<http://www.appsdba.info>



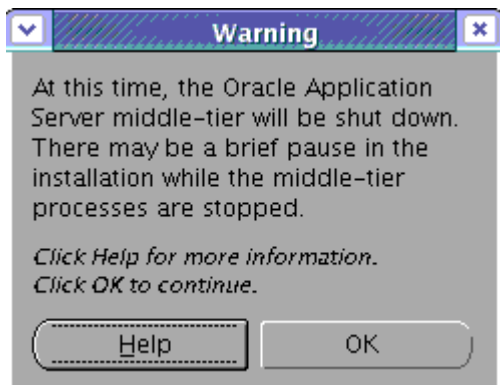
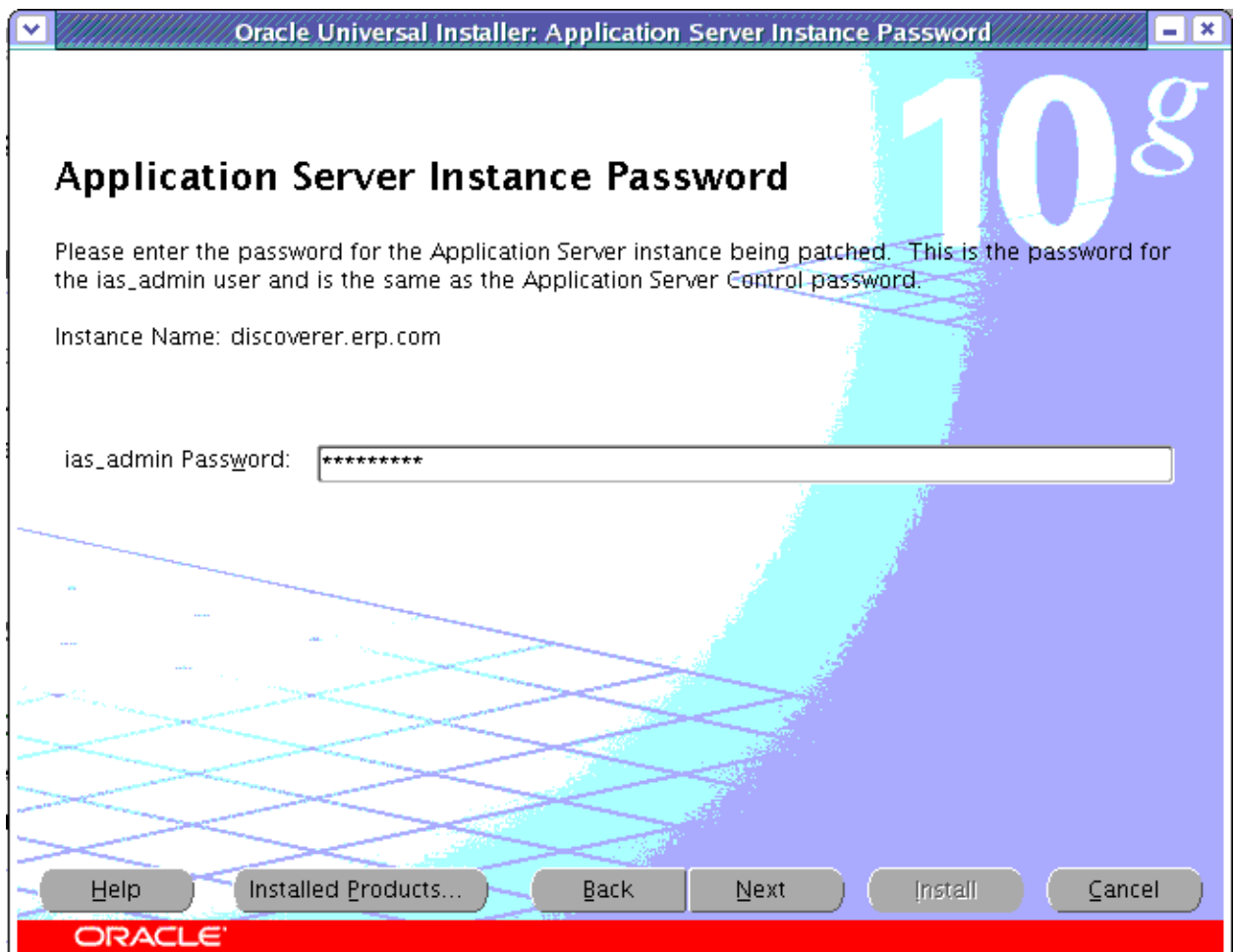
Author – *A.Kishore*
<http://www.appsdba.info>



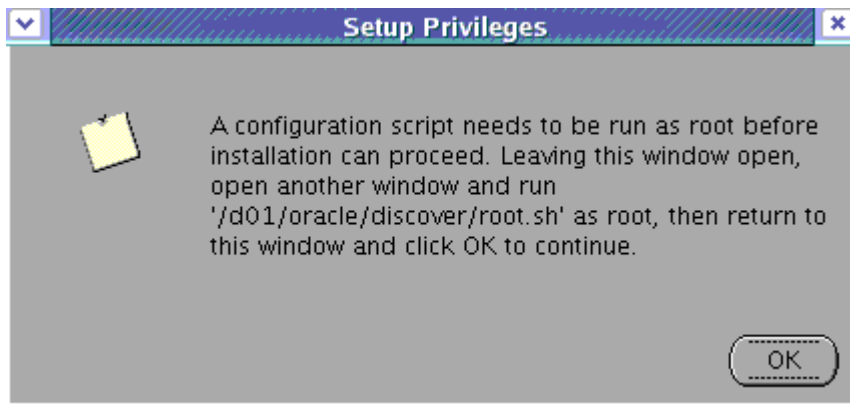
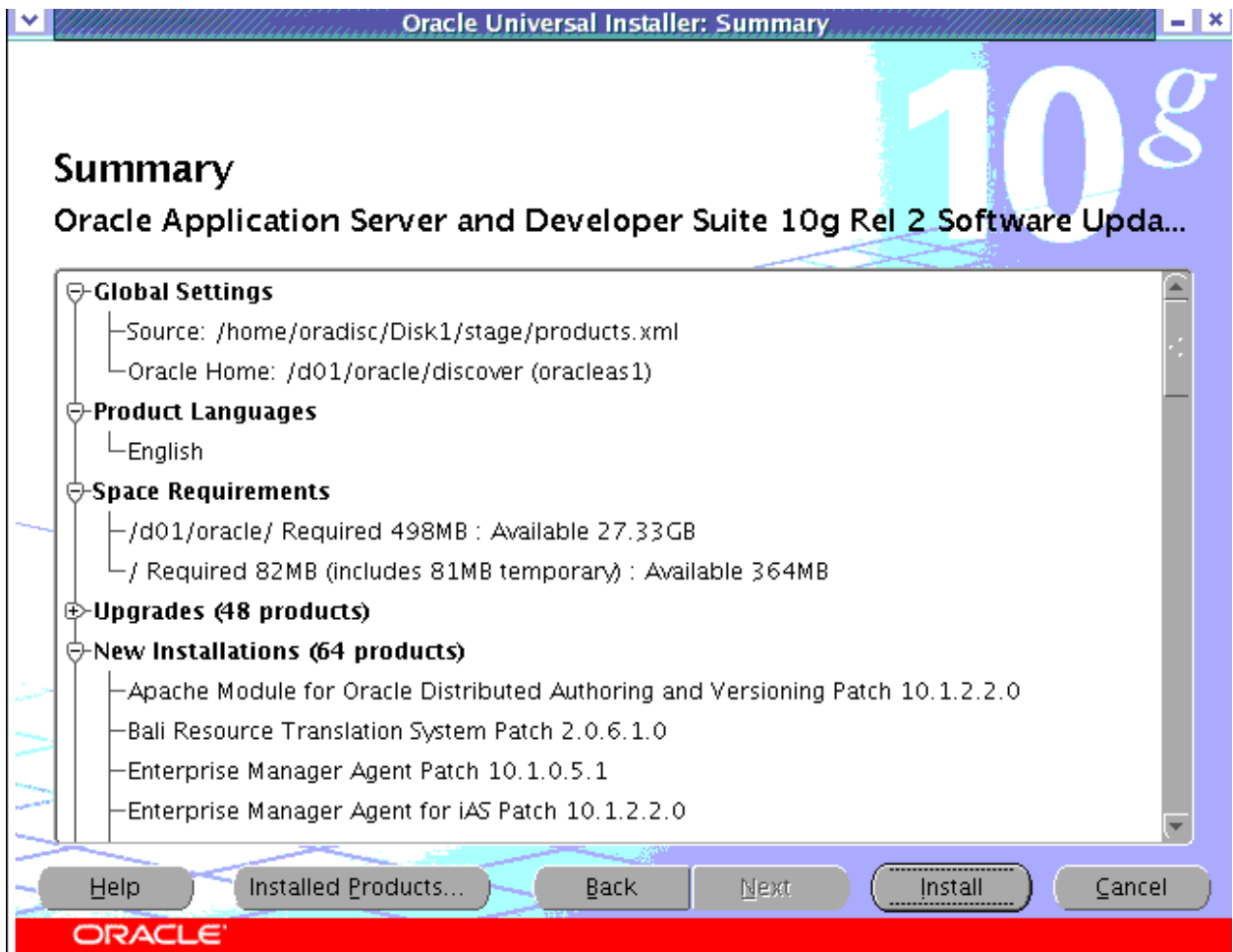
Author – *A.Kishore*
<http://www.appsdba.info>



Author – *A.Kishore*
<http://www.appsdba.info>



Author – *A.Kishore*
<http://www.appsdba.info>



Author – *A.Kishore*
<http://www.appsdba.info>



```
strings -a dis51ws |grep "Discoverer Version:"  
Discoverer Version:Server 10.1.2.55.26
```

Apply patch 7319096 - **Discoverer 10g (10.1.2.3) Plus/Viewer Cumulative Patch 3 (7319096) Readme For Linux/Unix**

Set the ORACLE_HOME environment variable to point to the BI Midtier Home

Add \$ORACLE_HOME/OPatch in the PATH

```
export PATH=$PATH:$ORACLE_HOME/OPatch
```

Stop opmn

```
- ./opmnctl stopall
```

cd 7319096

```
opatch apply
```

```
opatch lsinventory
```

```
- Patch 7319096 applied on Sat
```

Start opmn

Author – *A.Kishore*
<http://www.appsdba.info>

```
cd $ORACLE_HOME/opmn/bin  
./opmnctl startall
```

Copy dbc file from Apps R12 to Discoverer Middle Tier

```
cd $ORACLE_HOME/discoverer/secure  
cp $INST_TOP/appl/fnd/12.0.0/secure/PROD.dbc .  
Add entry in tnsnames.ora of Discoverer Middle Tier pointing to R12 Database  
cd $TNS_ADMIN  
cat /d01/oracle/PROD/inst/apps/PROD_erp/ora/10.1.2/network/admin/tnsnames.ora >>  
tnsnames.ora  
start the services  
cd $ORACLE_HOME/opmn/bin  
./opmnctl startall  
cd $ORACLE_HOME/bin  
./emctl start iasconsole
```

Create the Discoverer Tablespace on R12 database

```
create tablespace DISCOVERER datafile  
'/d02/oracle/PROD/db/apps_st/data/discoverer01.dbf'  
size 200M reuse extent management local uniform size 128K;
```

Create End User Layer (EUL) in R12 Database using eulapi - * only for Prod version (Non VISION instance)

```
$ORACLE_HOME/bin/eulapi -CREATE_EUL -APPS_MODE -CONNECT  
system/manager@PROD -USER EUL_US -PASSWORD EUL_US -  
DEFAULT_TABLESPACE discoverer -TEMPORARY_TABLESPACE temp -  
EUL_LANGUAGE US -APPS_GRANT_DETAILS apps/apps
```

java: error while loading shared libraries: libpthread.so.0: cannot open shared object file: No such file or directory

We just have comment LD_ASSUME_KERNEL variable in the discwb.sh which fixed the issue. Metalink note **729952.1** for details

-- Set Applications Profile Options for Discoverer using AutoConfig

```
<oa_disco_server>  
  <disco_url oa_var="s_disco_url">http://erp.com:7778</disco_url>  
  <disco_eul_prefix oa_var="s_disco_eul_prefix">EUL</disco_eul_prefix>  
</oa_disco_server>
```

Run Autoconfig

```
<ADMIN_SCRIPTS_HOME>/adautocfg.sh
```

Author – *A.Kishore*
<http://www.appsdba.info>

ICX: Discoverer Default End User Layer Schema Prefix - EUL
ICX: Discoverer End User Layer Language Override - American English
ICX: Discoverer Launcher -
[http://erp.com:7778/discoverer/plus?Connect=\[APPS_SECURE\]](http://erp.com:7778/discoverer/plus?Connect=[APPS_SECURE])
ICX: Discoverer Release - 10
ICX: Discoverer Viewer Launcher -
[http://erp.com:7778/discoverer/viewer?Connect=\[APPS_SECURE\]](http://erp.com:7778/discoverer/viewer?Connect=[APPS_SECURE])
ICX: Discoverer use Viewer - Yes
OKC:Discoverer Reports Enabled - No

Author – *A.Kishore*
<http://www.appsdba.info>

Set up E-Business Suite User/Responsibility for EUL Administration:

SYSADMIN/System Administrator

```
$ORACLE_HOME/bin/eulapi -CONNECT EUL_US/EUL_US@prod -  
GRANT_PRIVILEGE -USER SYSADMIN -PRIVILEGE administration -PRIVILEGE  
all_admin_privs -LOG Grant_End_User_Layer_Administration_Privileges.log
```

```
cd $ORACLE_HOME/discoverer/discwb.sh  
comment LD_ASSUME_KERNEL
```

-- takes time

Import Discoverer Content for E-Business Suite Release 12 using adupdeul.sh
mode=complete

```
sh /d01/oracle/PROD/apps/apps_st/appl/au/12.0.0/discover/adupdeul.sh  
connect=sysadmin/sysadmin@prod resp="System Administrator"  
gwyuid=APPLSYSPUB/PUB fndnam=APPS secgroup="Standard"  
topdir=/d01/oracle/PROD/apps/apps_st/appl/au/12.0.0/discover language=US  
eulprefix=EUL eultype=OLTP mode=complete iashome=/d01/oracle/discoverer  
logfile=import_complete_eul_us_prod.log
```

Refresh the Discoverer 10.1.2 End User Layer

```
sh /d01/oracle/PROD/apps/apps_st/appl/au/12.0.0/discover/adrfseul.sh  
connect=sysadmin/sysadmin@prod resp="System Administrator"  
gwyuid=APPLSYSPUB/PUB fndnam=APPS secgroup="Standard" eulschema=EUL_US  
eulpassword=EUL_US twotask=prod iashome=/d01/oracle/discoverer  
logfile=refresh_eul_us_prod.log
```

<http://erp.com:7778>

Author – *A.Kishore*
<http://www.appsdba.info>

ORACLE Discoverer Plus
Business Intelligence

Connect to OracleBI Discoverer

Welcome to OracleBI Discoverer.

Connect Directly

Enter your connection details below to connect directly to OracleBI Discoverer.

* Indicates required field.

Connect To

* User Name

* Password

* Database

End User Layer

Responsibility

Locale

ORACLE Discoverer Plus
Business Intelligence

Account Details: Select Responsibility

More than one Responsibility exists for the account you have chosen. Please select

Responsibility

Select a Responsibility.

Locale **English (United States)**

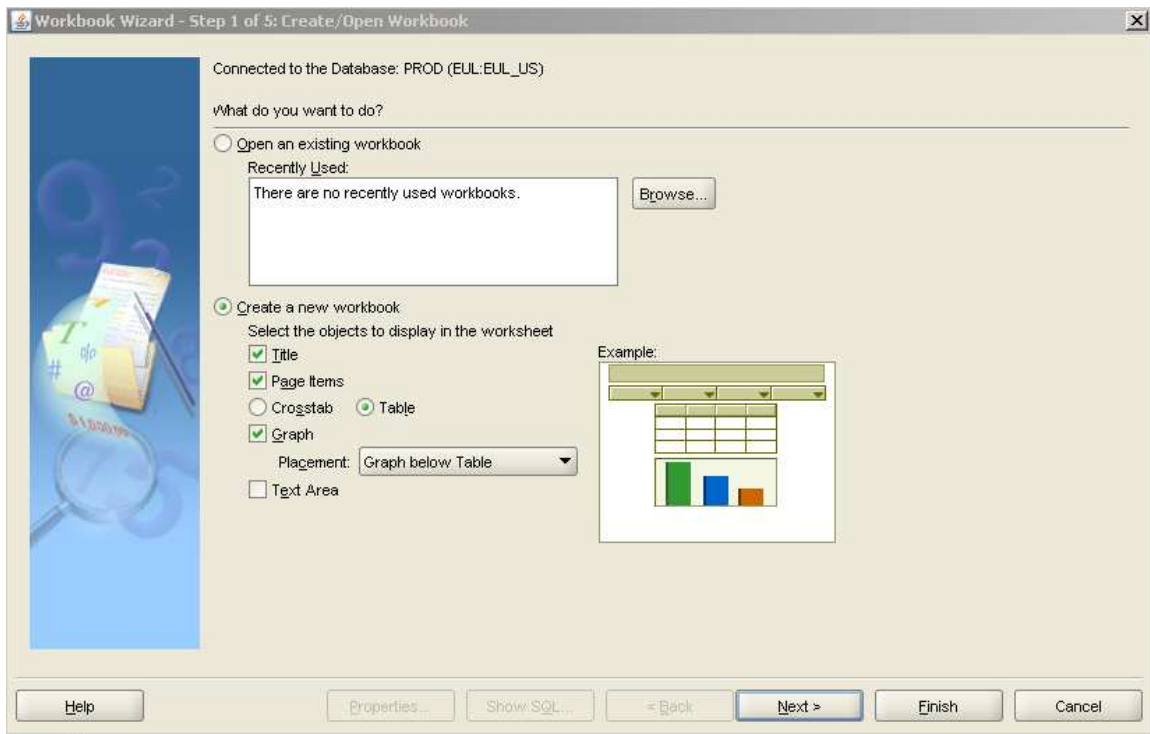
Database User Name **sysadmin**

Database **PROD**

Connection Type **APPS**

Responsibility

Author – *A.Kishore*
<http://www.appsdba.info>



References:

<http://onlineappsdba.com/index.php/2009/06/17/discoverer-with-oracle-apps-r12/>
<http://oracledbas.blogspot.com/2008/12/discoverer-10g-with-oracle-e-business.html>

For complete step by step doc check Metalink Note **373634.1**