

Author – *A.Kishore*
<http://www.appsdba.info>

Multi – Node Installation on Oracle Applications R12 using Shared application tier file systems

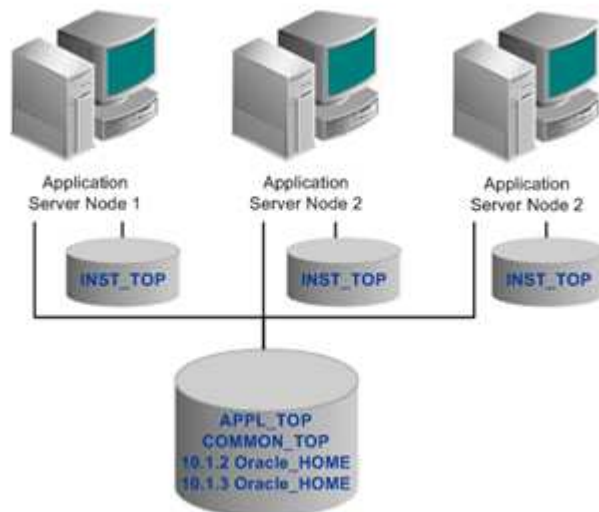
In this Installation, we shall setup multi-node Installation in Shared Application File system using NFS mount. In shared application tier file system, APPL_TOP, COMMON_TOP, 10.1.2 Oracle_Home and 10.1.3 Oracle_home reside in shared HDD.

Using a shared application tier file system has several benefits:

- Machines can easily be added to an existing system
- Disk space requirements are greatly reduced.
- Administrative tasks need only be carried out once, on any node
- An Applications patch only needs to be applied once, minimizing downtime
- It is easier to add nodes, to cater for more users and provide greater resilience

Assumptions:

linux1(192.168.0.109) – DB, Application tier components (web,forms,cps) – on NFS Mount
linux2(192.168.0.120) – Application tier components (web,forms,cps) - on NFS Mount
/d01/shared_mount – shared HDD using NFS



Author – *A.Kishore*
<http://www.appsdba.info>

1> UID and Groupid should be same on linux1 and linux2

On linux1
groupadd dba
useradd oratest -g dba
useradd appltest -g dba

UID and Groupid should be same in the both the servers, check /etc/passwd

On linux2
groupadd dba
useradd appltest -g dba

```
cat /etc/passwd  
appltest:x:510:500::/home/appltest:/bin/bash
```

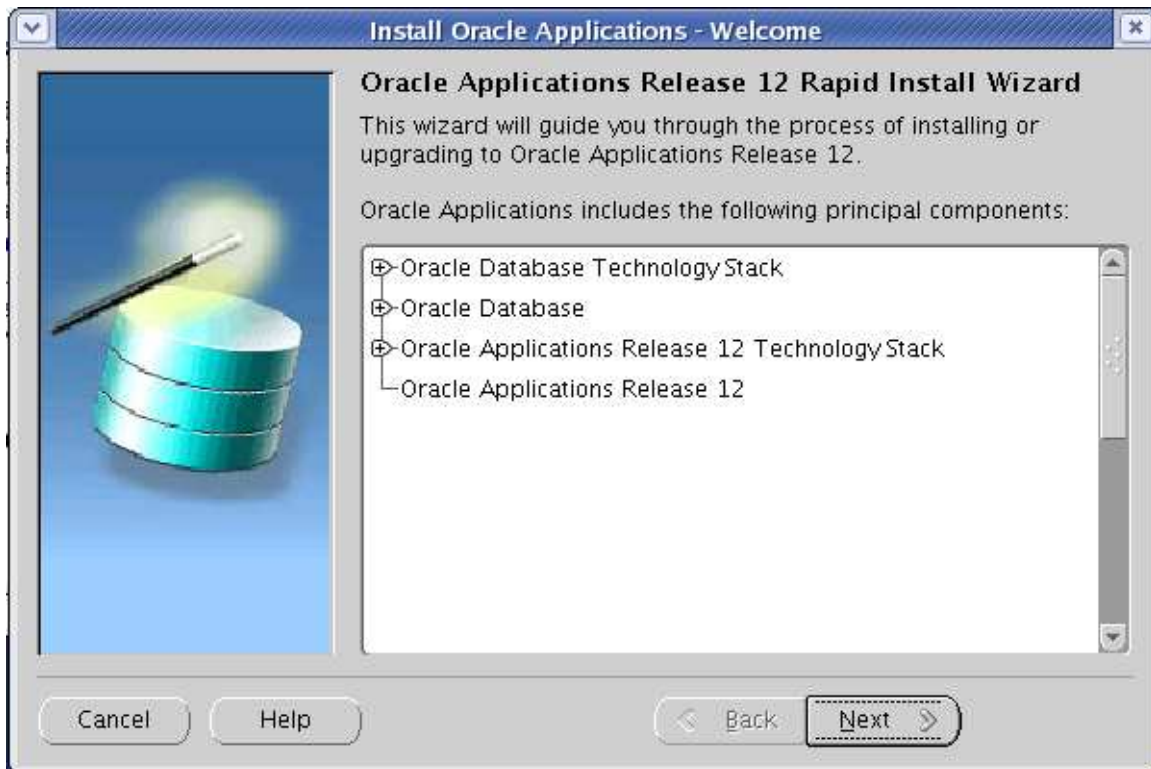
2> Share Applications tier on linux1

I am using linux1 HDD as shared HDD (NFS), in real time it would be SAN

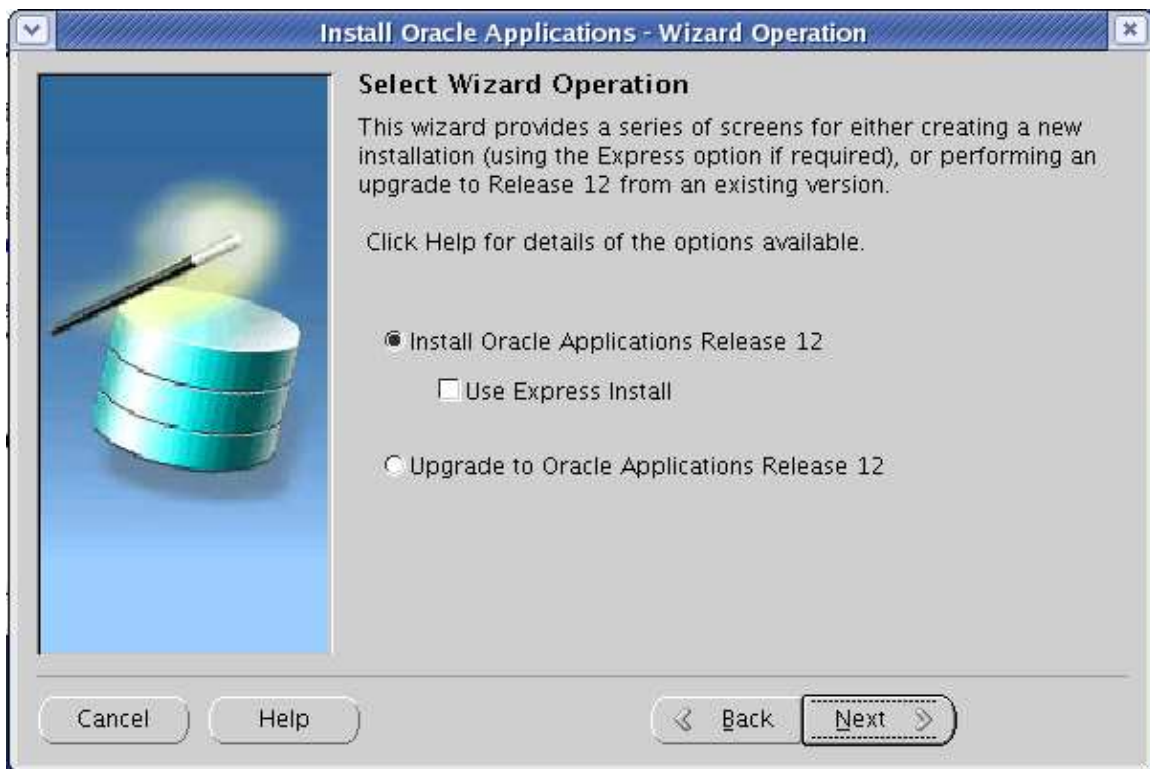
On linux1 – setup NFS configuration
vi /etc/exports
/d01/shared_mount linux2(rw)
service nfs restart

Author – *A.Kishore*
<http://www.appsdba.info>

On linux1 – start the rapidwiz



Author – *A.Kishore*
<http://www.appsdba.info>



Author – *A.Kishore*
<http://www.appsdba.info>



Author – *A.Kishore*
<http://www.appsdba.info>



Author – *A.Kishore*
<http://www.appsdba.info>

Global System Settings

The Port Pool mechanism is used to specify a set of port values for an Applications system. Each pool uses a unique set of values, allowing multiple environments to co-exist on the same host. Individual port values can be changed using the Edit Ports button.

Port Pool: 10

Derived Port Settings:

Database Port	1531
RPC Port	1636
Web SSL Port	4453
OHS Local Port	7777

Edit Ports

Cancel Help Back Next

Database Node Configuration

Use the Edit Paths button to see file system details.

Database Type: Fresh Database

Database SID: TEST

Host Name: linux1

Domain Name: com

Operating System: Linux (32-bit)

Database OS User: oratest

Database OS Group: dba

Base directory: /d01/oracle/TEST

Browse Edit Paths

Cancel Help Back Next

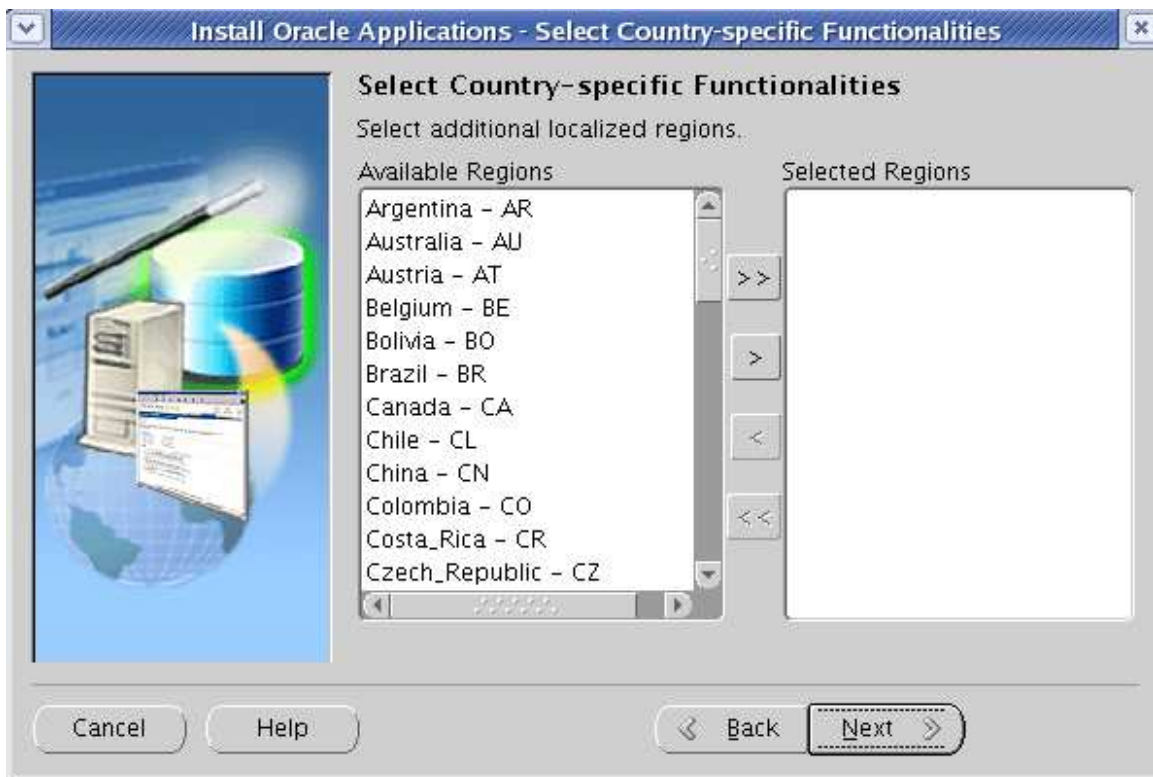
Author – *A.Kishore*
<http://www.appsdba.info>



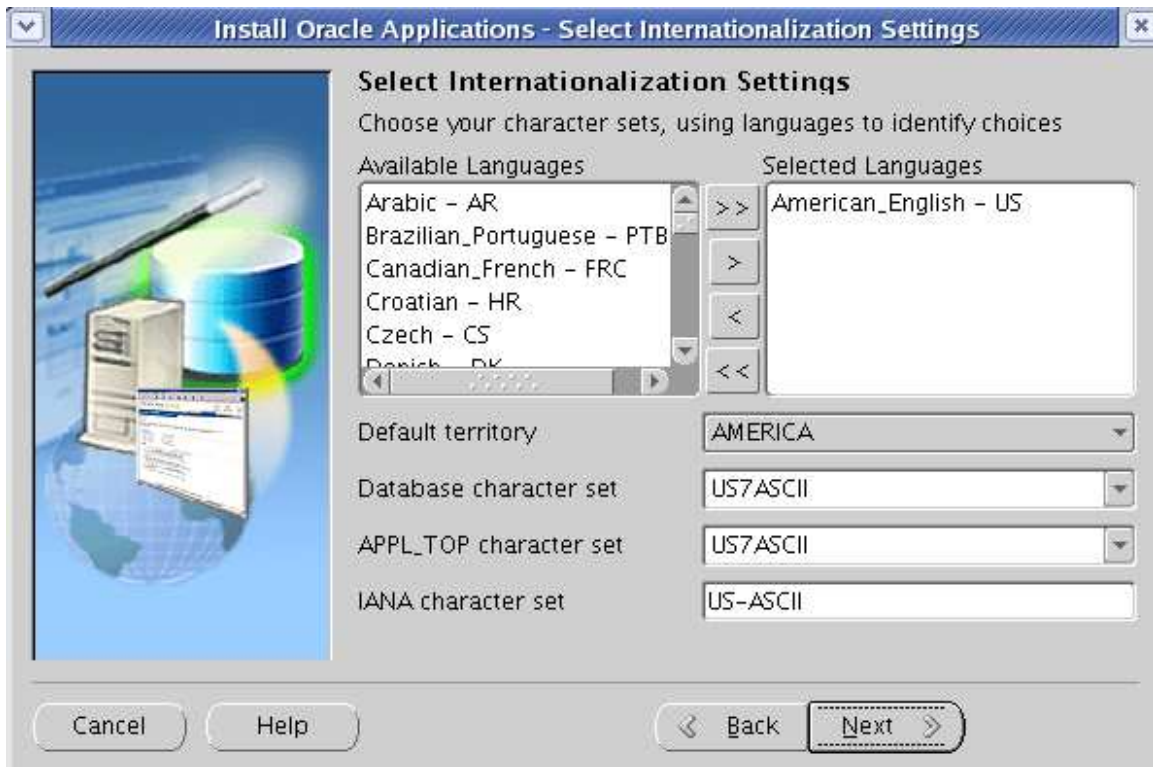
Author – *A.Kishore*
<http://www.appsdba.info>



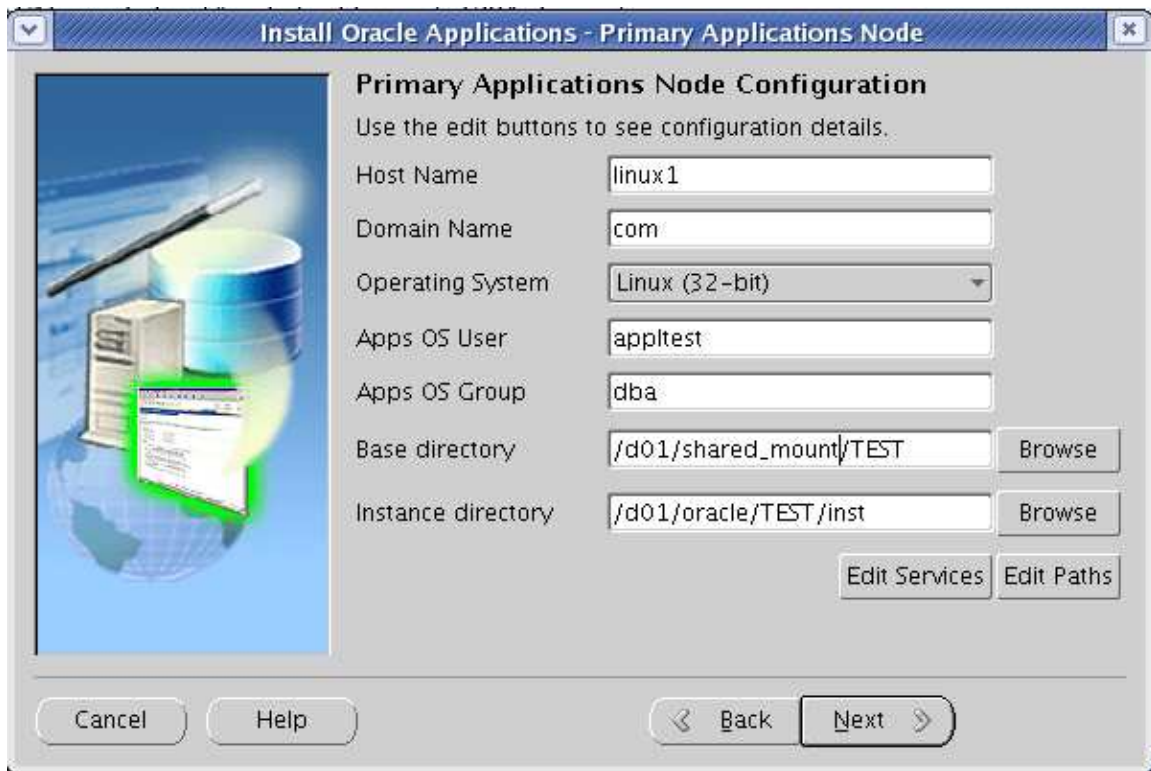
Author – *A.Kishore*
<http://www.appsdba.info>



Author – *A.Kishore*
<http://www.appsdba.info>



Author – *A.Kishore*
<http://www.appsdba.info>

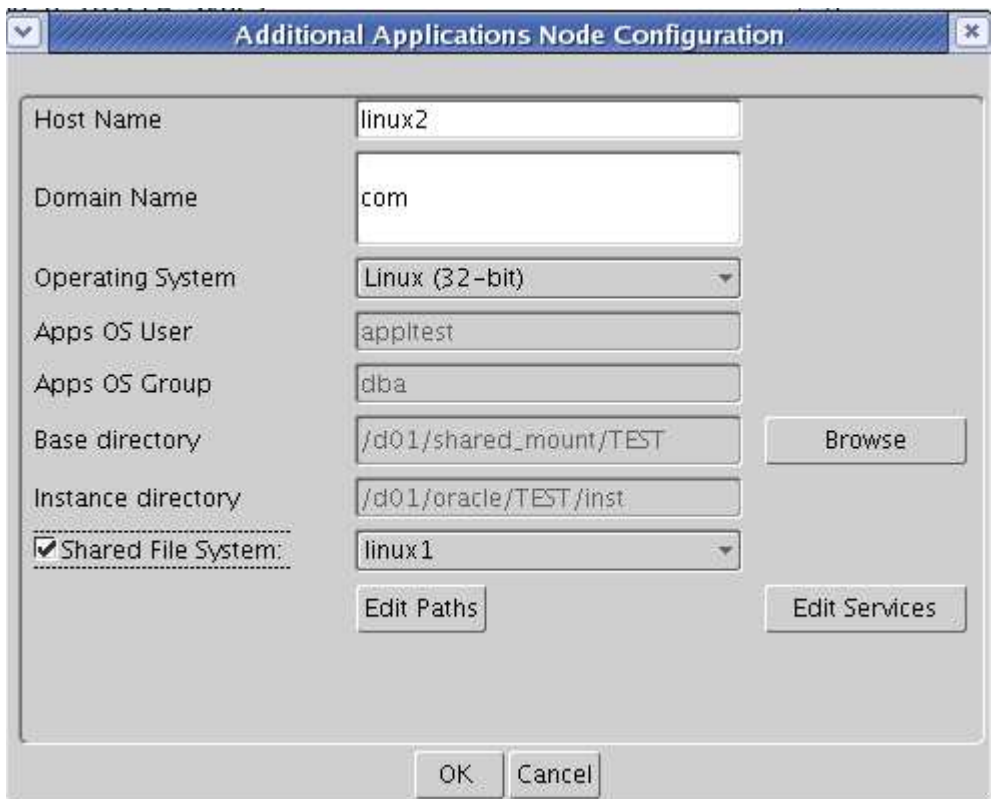
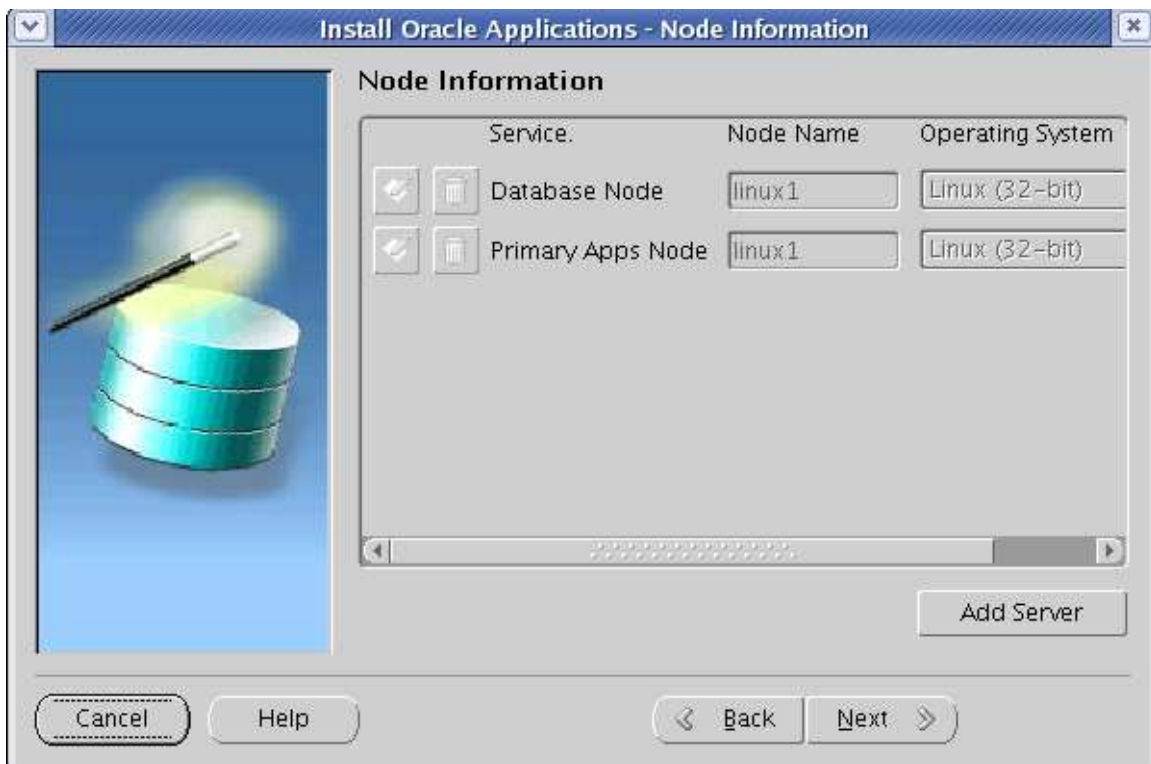


The screenshot shows a window titled "Install Oracle Applications - Primary Applications Node". The main content area is titled "Primary Applications Node Configuration" and includes the instruction "Use the edit buttons to see configuration details." Below this, several configuration fields are listed:

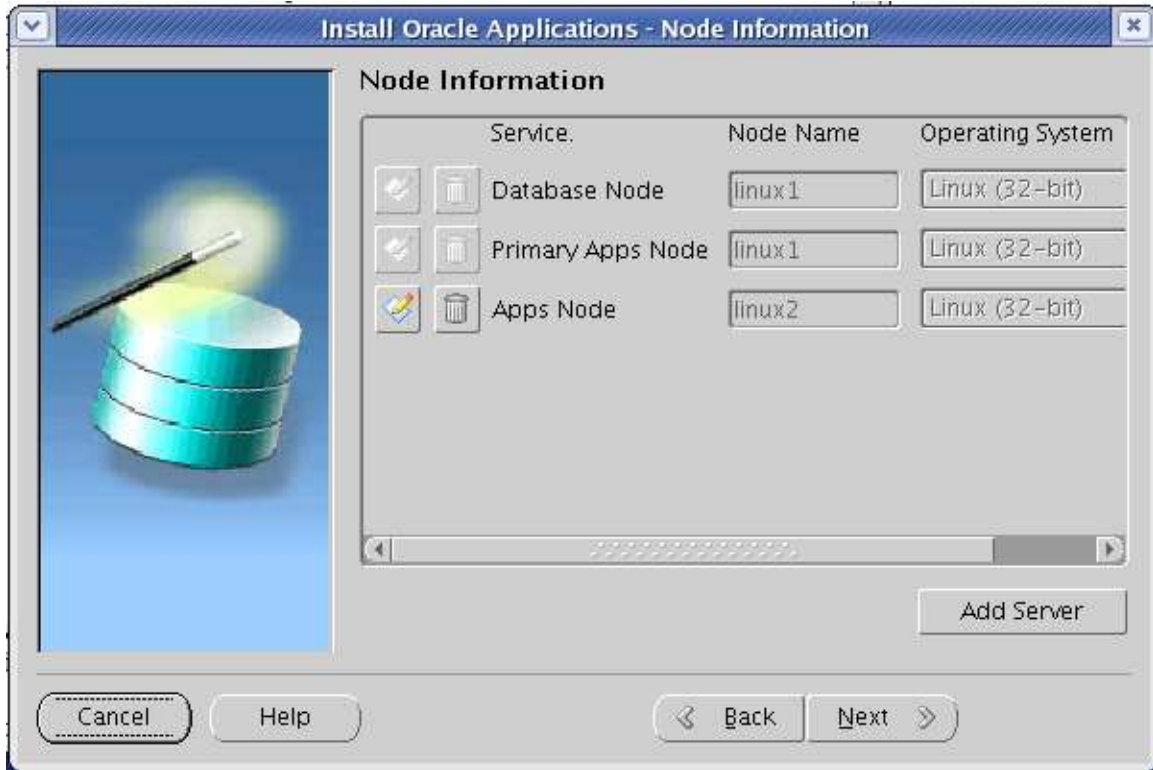
- Host Name: linux1
- Domain Name: com
- Operating System: Linux (32-bit)
- Apps OS User: appltest
- Apps OS Group: dba
- Base directory: /d01/shared_mount/TEST (with a "Browse" button)
- Instance directory: /d01/oracle/TEST/inst (with a "Browse" button)

At the bottom right of the configuration area, there are two buttons: "Edit Services" and "Edit Paths". At the bottom of the window, there are four navigation buttons: "Cancel", "Help", "Back", and "Next".

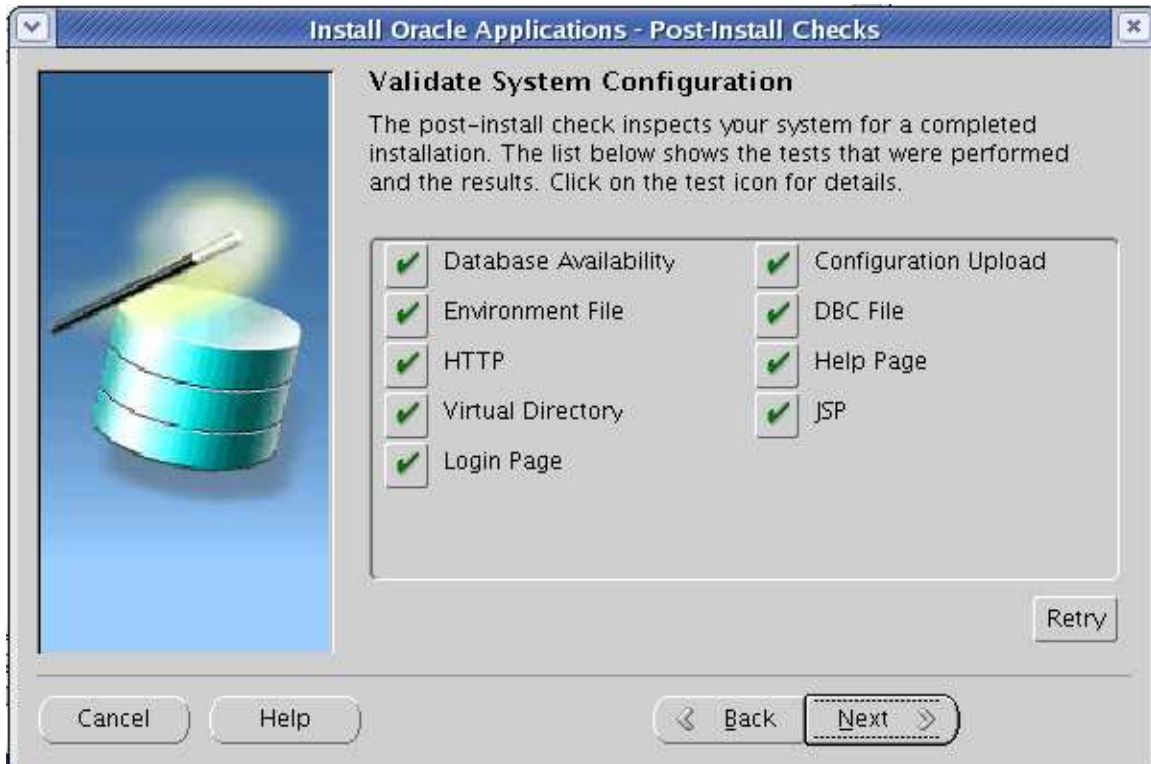
Author – A.Kishore
<http://www.appsdba.info>



Author – *A.Kishore*
<http://www.appsdba.info>



Author – *A.Kishore*
<http://www.appsdba.info>



Author – *A.Kishore*
<http://www.appsdba.info>



Author – *A.Kishore*
<http://www.appsdba.info>

On the Second Node – linux2

Check whether same users and ids are same

```
cat /etc/passwd
```

```
apptest:x:510:500::/home/apptest:/bin/bash
```

On linux2

```
mkdir -p /d01/shared_mount/TEST/apps/apps_st/comm
```

```
mkdir -p /d01/shared_mount/TEST/apps/apps_st/appl
```

```
mkdir -p /d01/shared_mount/TEST/apps/tech_st/10.1.2
```

```
mkdir -p /d01/shared_mount/TEST/apps/tech_st/10.1.3
```

```
mount 192.168.0.109:/d01/shared_mount/TEST/apps/apps_st/comm /d01/shared_mount/TEST/apps/apps_st/comm
```

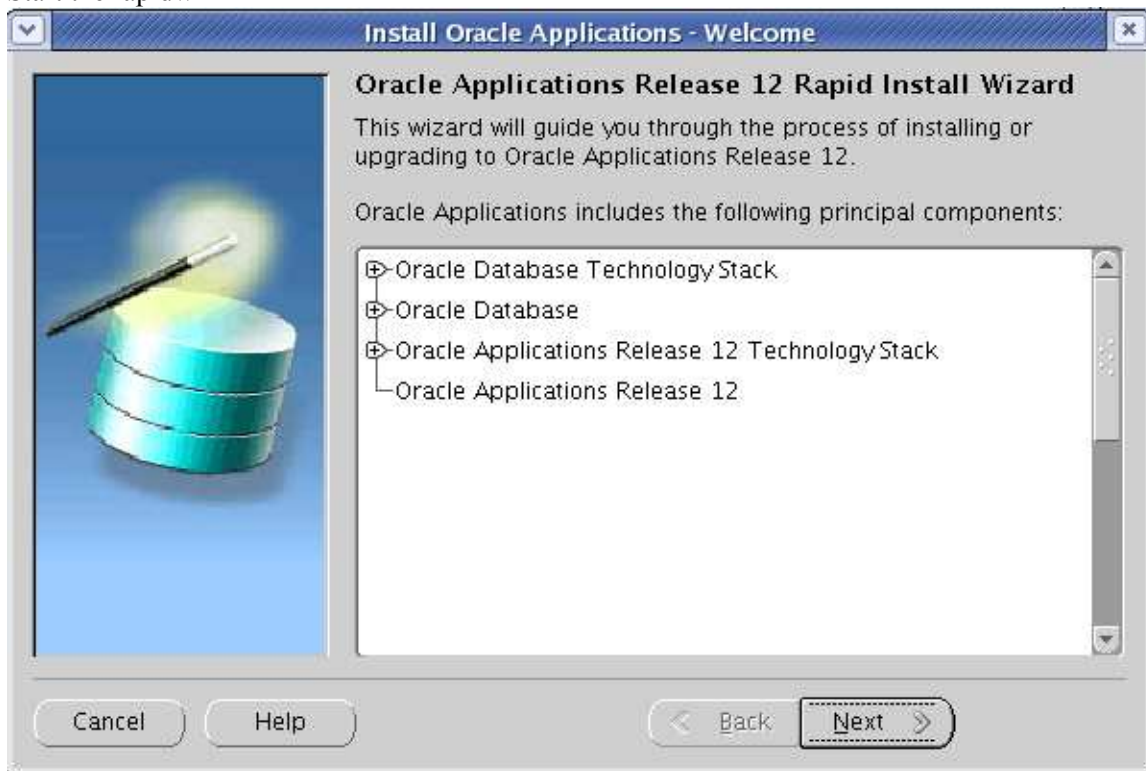
```
mount 192.168.0.109:/d01/shared_mount/TEST/apps/apps_st/appl /d01/shared_mount/TEST/apps/apps_st/appl
```

```
mount 192.168.0.109:/d01/shared_mount/TEST/apps/tech_st/10.1.2 /d01/shared_mount/TEST/apps/tech_st/10.1.2
```

```
mount 192.168.0.109:/d01/shared_mount/TEST/apps/tech_st/10.1.3 /d01/shared_mount/TEST/apps/tech_st/10.1.3
```

Check the mount points and check whether apptest user has write permission on these folders

Start the rapidwiz



Author – *A.Kishore*
<http://www.appsdba.info>



Author – *A.Kishore*
<http://www.appsdba.info>



References:

<http://appsfusion.blogspot.com/2008/01/shared-applicaton-file-system.html>

<http://appsfusion.blogspot.com/2008/01/step-by-step-installation-of-shared.html>

Note:384248.1 – Sharing The Application Tier File System in Oracle E-Business Suite Release 12

Note:380489.1 - Using Load-Balancers with Oracle E-Business Suite Release 12